

26" IR Touch Screen (the Dust-proof Type)



NJYTouch Technology Co., Ltd.

www.njytouch.com

May. 2014

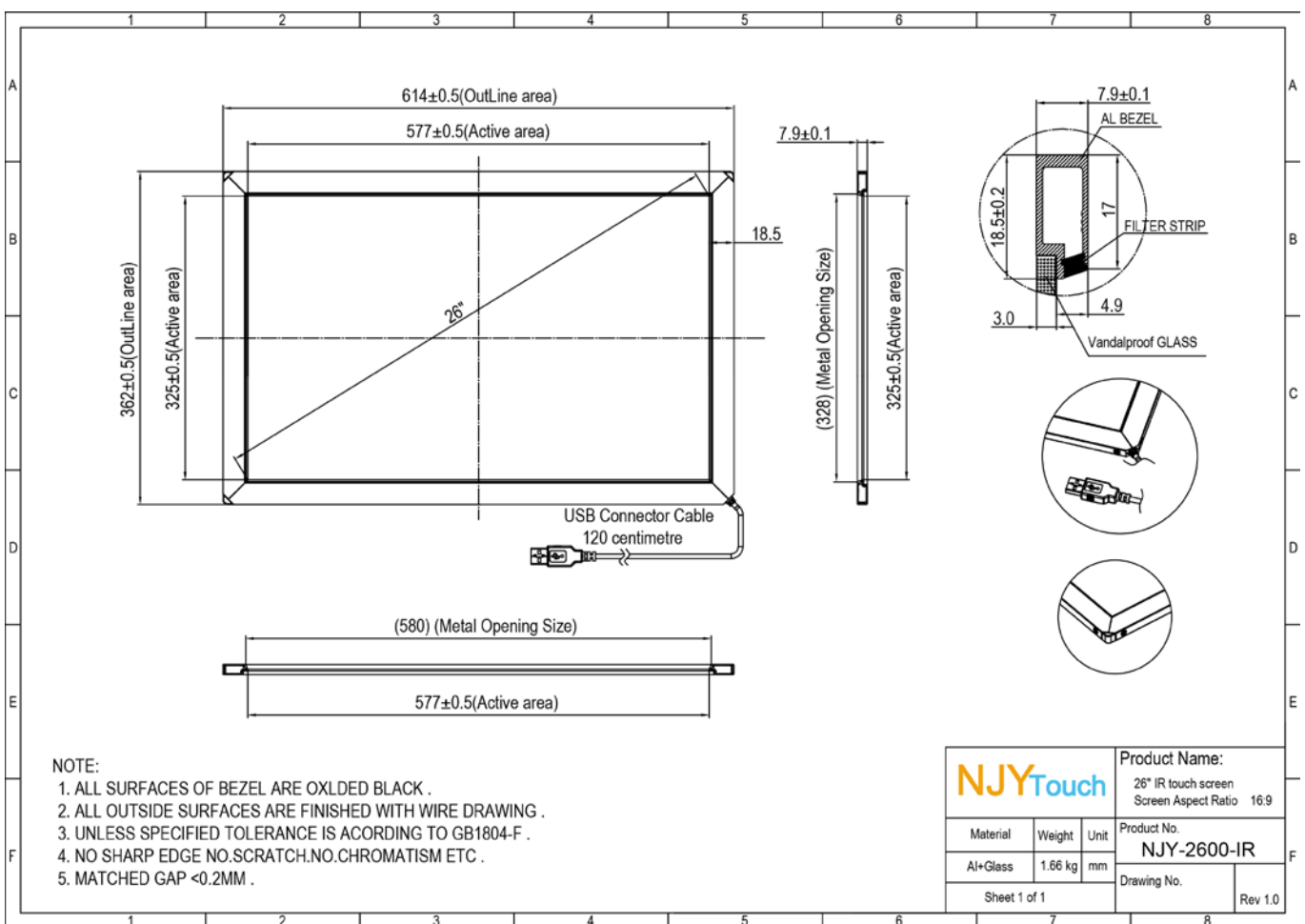
Part 1. Technical Specification

MECHANICAL	
P/N	NY-2700-IR
Housing	Aluminum frame
Touch panel size(mm)	614*362
Active area(mm)	577*325
TOUCH CHARACTERISTICS	
Input Method	Finger or touch pen (Support Six points touch)
Touch Activation Force	Non Minimum activation force
Position Accuracy	2mm
Resolution	4096(W) × 4096(D)
Response Time	Touch: 8ms Drawing : 8ms
Cursor Speed	120 dot/sec
Glass	No glass or 3mm glass, Transparence : 92%
Optics Cell Area	6.0*9.0mm
Object Touch Size	≥ Ø5mm
Touch Intensity	Over 60 millions single touch
ELECTRICAL	
Operating Voltage	DC 4.5V ~ DC 5.5V
Power	1.0W (100mA at DC 5V)
Anti -Static Discharge (Standard :B)	Touch Discharge, Grade 2: Lab Vol 4KV Air Discharge, Grade 3: Lab Vol 8KV
ENVIRONMENT	
Temperature	operating: -10 °C ~ 50 °C storage: -30°C ~ 60 °C
Humidity	operating: 20% ~85% storage: 0%~95%
Relative Humidity	40 °C, 90% RH
Anti – glare Test	Incandescent lamp (220V,100W) , operating distance over 350mm
Altitude	3,000m
Interface	USB2.0 full speed
Detection Method	Infrared rays
Seal Ability	IP65
Working Environment	Under sunlight ,indoor and outdoor
Application of Display	LED、LCD、PDP
Software (Firmware)	
Scanning	Auto full screen scanning
Touch Trigger	Drop,raise,move on screen
Output	Coordinate output

Part 2. Main Feature

- ◆ Compact structure, nice outlook due to its Aluminum frame design of the frames.
 - ◆ High stability. Any changes of time or environment will not cause any drift
 - ◆ Quick Response, long life-span.
 - ◆ Assembled with tempered glass, so it is very durable. Vandal-proof, Water-proof and dust-proof.
- Detachable, easy for transportation

Part 3. Drawing

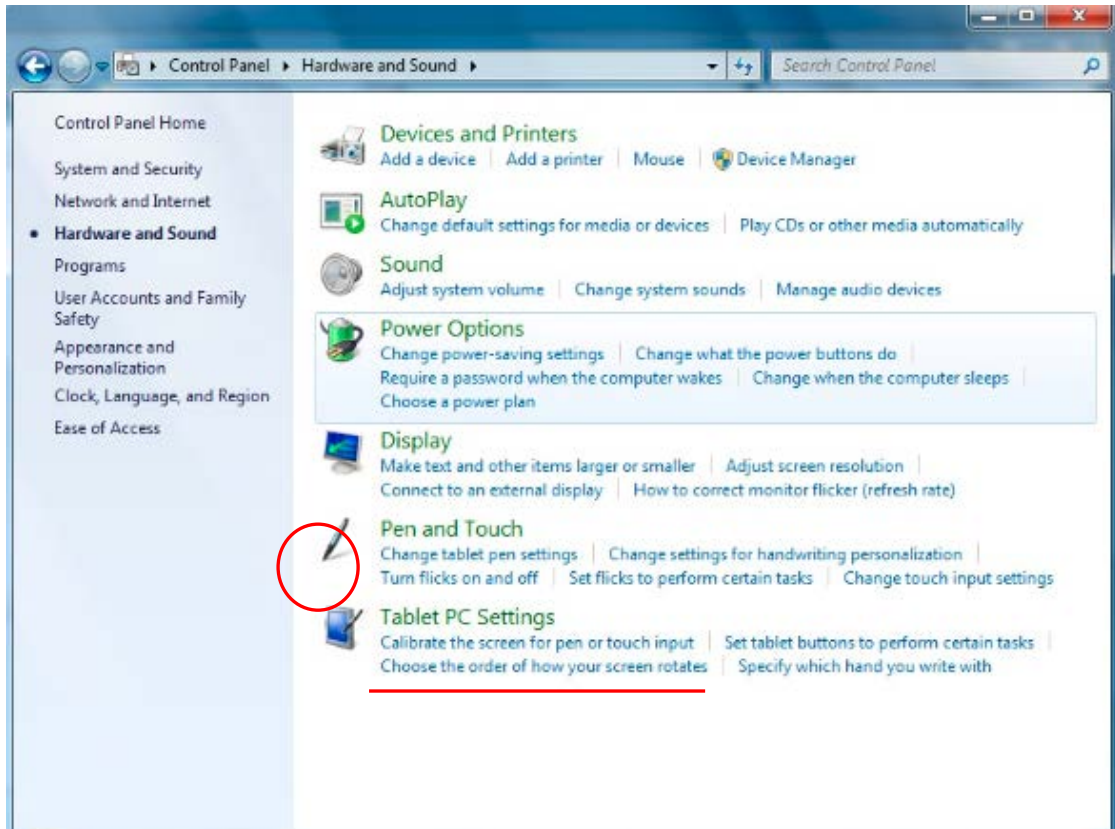


Part 4. Install software and calibration

4.1 Installation steps

- 1.Connect IR touchscreen to pc motherboard via USB cable.
- 2.IR Touchscreen is Driverless products,After connecting the computer,system will automatically search for infrared touch screen .
- 3.Wait about 10s,After the system complete installation automatically,it can be used directly,In the control panel of Windows 7,if "Pen and Touch " occurred,it shows the touch screens has been installed,as shown in red circle Figure below .In WIN XP system,you can find IR touch screen device by looking at"USB input device" in device manager .

Change from touch start



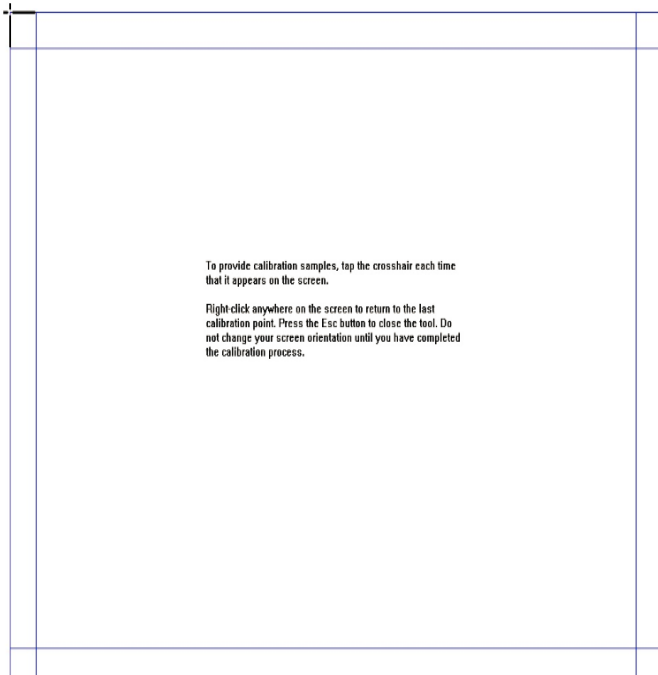
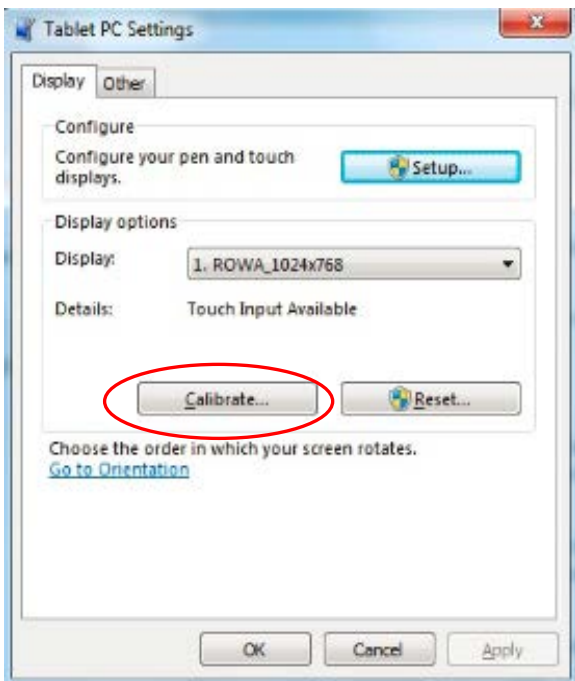
(Picture 1)

4. Calibration

Typically, infrared screen does not need calibration can be used directly, but sometimes, because the customer need to use "Vertical screen" mode or other reasons cause the deviation of infrared screen coordinates, you can calibrate it by the following A, B methods:

A: Do calibration by Win7 Built-in calibration procedure, Here are the steps:

Open the Control Panel, find **Tablet PC Settings**, click **Calibrate the screen for pen or touch input**, as Pictures 1 Red line shown, the Picture 2 tips will pop up screen, click "**Calibrate**", Picture 3 will pop into view, Use Win7 prompts, in turn click 16 calibration blank "+" to finish the calibration .



(Picture 2)

(Pictures 3)

B: Do calibration by Njytouch calibration procedure

Click "CJ-IR Calibration.exe" file in CD, the below Picture 4 tips will pop up screen, in turn click 4 calibration blank "+" to finish the calibration.

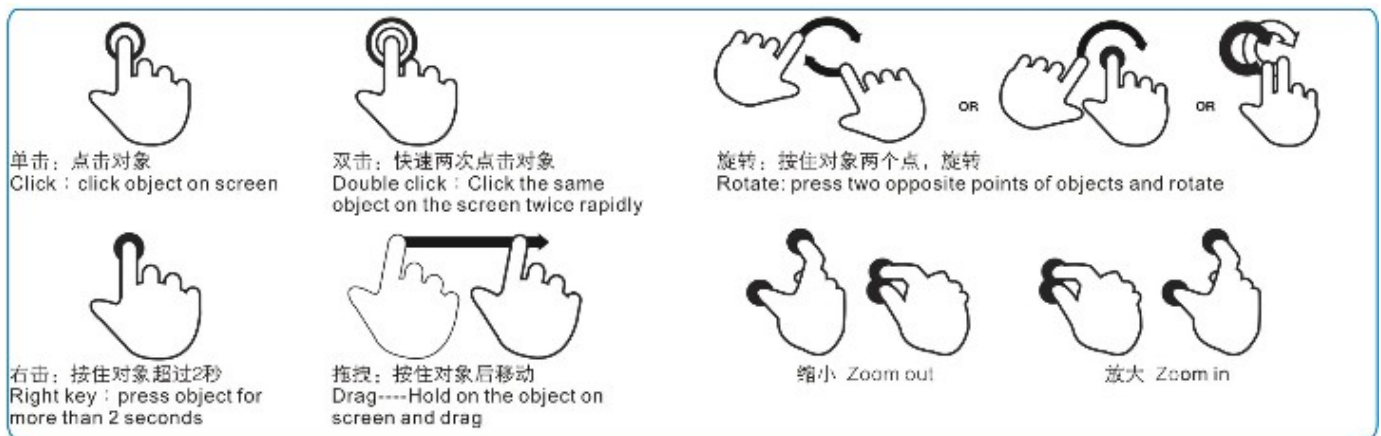


(Picture 4)

Part 5. Multi Touch

Interface: USB ,plug and play, no need touch driver

Njytouch Multi-touch can support all the multi-touch gesture that Microsoft defined as below:



Support 2, 4 ,6 points touch .

The background of Windows 7 multi-touch screen:

With emerging of the Microsoft 's newest O/S windows 7, our company has developed a multi-touch screen for win.7. which can completely compatible with win.7 and plug and play, no need to install any touch driver.

Change from touch start

Recommendation — WIN7 OS + WIN7 Multi touch screen

1) what is the function of WIN7 Built-in calibration program ?

It can correct a slight 1-2cm drift.

2) Which programs can use two point touch ?

WIN7 built-in read picture program、WIN7 built-in drawing picture、Microsoft TOUCH Package、microsoft office and the software which can support WIN7 multi touch function

3) If the touch screen can be used for Vertical?

Please kindly check if the touchmonitor can be workable Vertical or not, ensure the monitor and windows desktop are Vertical screen also.

After confirmed, please set the windows desktop in vertically, then place the touchmonitor in vertical.

4) If there is any driver and calibration program provided?

Because our product can be compatible with windows 7 very well, so there is no driver provided ,please calibrate it with the win.7 built-in calibration program if you need .

5) Why multi touch could not be used in windows 7 vista home basic ?

Because the microsoft canceled to support the multi touch in windows 7 vista home basic .please kindly use the home premium and above version.

Part 6. FQA

1.No response

1) Please check if the contacting cable and power supply contact well or not, including checking the leading wire is broken or not, ensure the touch screen voltage input is between 4.75V and 5.25V.

2) Ensure the cable and infrared tub are not damaged .

3) Enter the device manager, check if you can find the touch screen hardware (you can pull and plug cables to check whether the device is disappear or not in the device manager),this way is only for USB port.

2.Break line means that if there is no connecting error , Drawing lines in active area ,lines is discontinuous .

1) Pervious strip (frame) was broken or covered by foreign bodies . Using a cloth with alcohol to wipe clean and remove the foreign bodies .

2) Ground wire has not be contact well.

3) Touch screen is deformation in installing. After disassembling the touchscreen, place it in level and test its performance. If no problem, please install it again. If there is a heavy deformation of the touchscreen , please return it to factory for repairing..

3. Mouse jump mean Mouse jump in varying degree in the touch area when test under normal condition

1) Pervious strip (frame) has been broken or covered by foreign bodies . Using a cloth with alcohol to wipe clean, and remove the foreign bodies.

2) Ground wire has not be contact well.

3) Optical interference is serious, clear the interference

4) A heavy deformation of the touch screen ,please return it to factory for repairing.

4. Drawing lines jitter: Under the condition of normative testing, drawing horizontal or vertical line in touch area, pen jitter in varying degree .

-- Optical interference is serious, clear the interference

5. Some areas no touch: Under the condition of normative testing, there is no touch in some area.

-- Previous strip (frame) has been broken or covered by foreign bodies . Using a cloth with alcohol to wipe clean and remove the foreign bodies .

6. Drift ,under the condition of normative testing, click in touch area, mouse and touch pen do not coincide.

1) Ensure testing with the correct touch drive, and calibrate again

2) IR Dual touch screen need not driver under win7 ,if meet drift, please use Microsoft own touch screen calibration way to calibrate it..

7, There is about 1-2cm area has no touch in edge.

1) Main reason, calibrate in wrong way .

2) Whether click the centre of the calibration spot when do calibration

Part 8. Product Warranty

IR touchscreen for 3 years

Part 9. HOW TO Connect

www.NJYTouch.com

Add: o. A13 Building, San Xin Industrial Area,
Jiangbei District, HuiZhou, GuangDong, ,P.R.China

Tel: +86-752-2383931

Fax: +86-752-2383930

Sales & Marketing: sales@NJYTouch.com